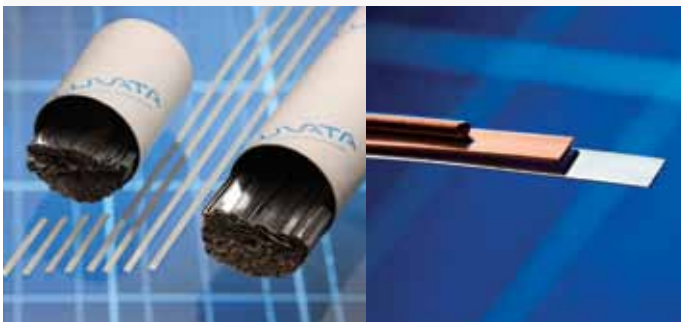


## Sunwire® Technical datasheet

Luvata Sunwire® is a tailor-made product. It is our flattest, straightest, softest wire yet, and more versatile than ever before. Our technical experts work closely with our customers to choose the right product for their application and to design a solution that works.

Softer copper has many advantages including faster throughput, better yield and a much lower breakage rate for delicate silicon solar cells. Quality inspection certificate 3.1 is included in every shipment.

This datasheet serves as a guide to the product specifications. For more detailed information, talk to us.



### About Luvata

Luvata is a world-leader in metal fabrication, component manufacturing and related engineering and design services. We are committed to partnering with our customers to help them increase their competitiveness. Our products and services enable our customers to improve operational efficiency, improve products and reduce tied-up capital. This focus on our customers' results, backed by our unfailing reliability, makes us a partner on which our customers base their future development.

## Dimensions\*

Thickness (mm):	0,080 – 0,500 ± 0,007
Width (mm):	1,000 – 6,000 ± 0,08

## Coatings (hot dipped)\*

Lead free (RoHS complied):	Sn100; SnAgCu 96,5/3,0/0,5
Leaded:	SnPbAg 62/36/2; SnPb 63/37; SnPb 60/40
Low temperature:	SnBiAg 60/38/2
Coating composition and thickness:	4 – 50 µm ± 3 µm each side

## Base Material

Cu-OF1 CW007A (Acc. EN13602)	CDA 102 – Electrical Conductivity 101% – 103% IACS Resistivity ≤ 1,72 x 10 <sup>-8</sup> Ωm
------------------------------	--

## Mechanical Properties

Available Yield Strengths Rp <sub>0,2</sub> (N/mm <sup>2</sup> ):	<140
	<90
	<70
	<50
Elongation at fracture:	>25%
Camber (mm/m):	<6 measured from the center of the spool

## Spool Dimensions\* (mm)

Spool type	d1	d2	d3	L1	L2	Approximate winding volume in kg
SV 150 / 10-S	152	100,5	16,1	121,5	101	4,5
K 160	160	100	22	160	128	8

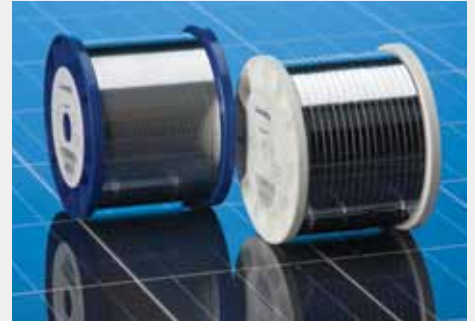
HKV 160	160	90	22	160	85	8
HKV 200	200	112	22	200	106	15

SV 380	380	114	102	depends on wire width	depends on wire width	1,5 – 5,0
--------	-----	-----	-----	-----------------------	-----------------------	-----------

## Pre-cut\*

65 mm - 630 mm
----------------

\* Also according to customer specification



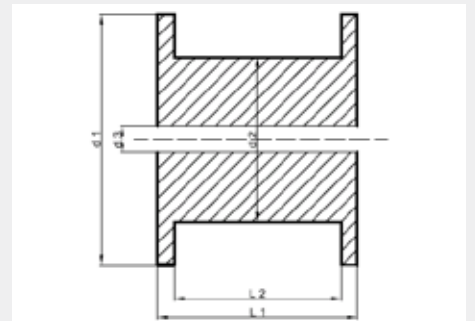
SV 150 / 10-S



SV 380



HKV 160 / HKV 200



Spool dimensions

**Luvata Pori Oy**  
Kuparitie P.O. Box 60, FI-28101 Pori, Finland  
Tel: +356 2 626 6111 Fax: +368 2 626 5318

**Luvata Appleton LLC**  
553 Carter Court, Kimberly 54136, WI, USA  
Tel: +920 749 3820 Fax: +920 749 3853

**Luvata Malaysia Sdn Bhd**  
PLO 573 Jalan Keluli 10, Kawasan Perindustrian  
Pasir Gudang, 81700 Pasir Gudang, Johor, Malaysia  
Tel: +607 252 6688 Fax: +607 252 3733

**Luvata Suzhou Ltd.**  
53 Sanzhuang Street, Weiting Town, Suzhou  
Industrial Park, Jiangsu Province, 215121, China  
Tel: +86 512 6285 1018 Fax: +86 512 6285 1020